

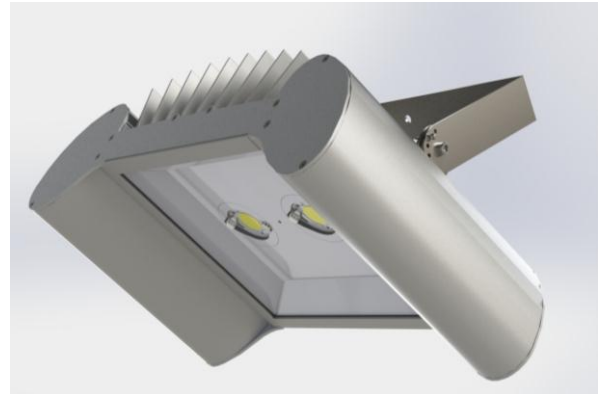
# Data sheet: *SpotLED* SERIES

rev.07/18



## Product description

SpotLED is a LED extruded aluminum projector designed for the lighting of parking, facades, sports facilities and industrial areas. Due to its extruded anodized aluminium housing SpotLED has an optimal thermal control and a longer system life; in terms of diffusers, you can choose between a tempered glass shield or a polycarbonate one, depending on the type of the installing environment: tempered glass shields ensure resistance to chemical substances, thermal shocks and collision while the polycarbonate version makes the device suitable for food industries.



**Applications:** Warehouses, manufacturing facilities, commercial facilities, exhibitions, food industry.

**Suggested installation heights:** 276.6 in <  $H$  < 393.7 in (>393.7 in with lenses)

## Technical features

**Luminaire Luminous flux:** 12,350 lm / 13,500 lm / 15,880 lm / 16,470 lm / 17,650 lm

**Power range:** 80 ÷ 110 W

**Light source:** CITILED COB

**Light source efficacy:** up to 164 lm/W

**Colour Rendering Index (CRI):** > 70

**Colour Correlated Temperature (CCT):** 3000 K, 4000 K, 5000 K (Std)

**Light emission:** 100°(std), 60°(CONCENTRATE), 140°/90°

**Input voltage range and frequency:** 110 ÷ 300 Vac / 47 ÷ 63 Hz

**Driver (built-in):** MEANWELL

**Insulation class:** SELV - CLASS II

**Power factor:** > 0,9

**Lifetime:** L80 > 90,000h @ Ta=77°F (IES TM-21-11 Prediction)

**Dimensions:** 10.08 in x 18.6 in x 5.94 in

**Materials:** Luminaire body made by anodized aluminium; stainless steel screws

**Diffuser material:** tempered glass or polycarbonate.

**Weight:** 13.23 lb

**Operating Temperature:** -4 to 113°F

**IP protection:** Damp Location - IP65

**Luminous flux dimming (on demand):** DALI - 1÷10 Vdc

**Reference Standards:** EN60598-1, EN60598-2-1, EN62471, EN62031, EN61547, EN61000-3-2 (C class)

**Standard equipment:** luminaire provided with a 3-pole plug for a fast power supply connection and hooks to make easier the installation

**Accessories (on demand):** suspension kit

**Diffusers on demand:** clear glass (Std), transparent polycarbonate, matt polycarbonate and frosted polycarbonate.

**Colour:** Anodized SILVER GREY (Std); others customizable

**Warranty:** 5 YEARS

CLASS 2

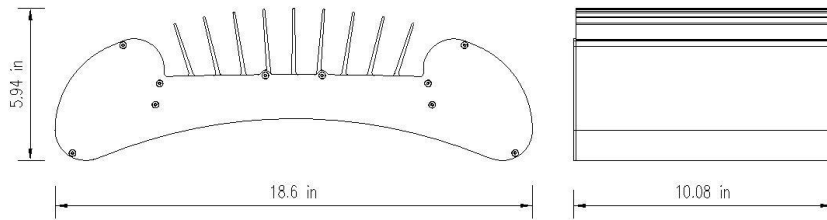


# Data sheet: *SpotLED SERIES*

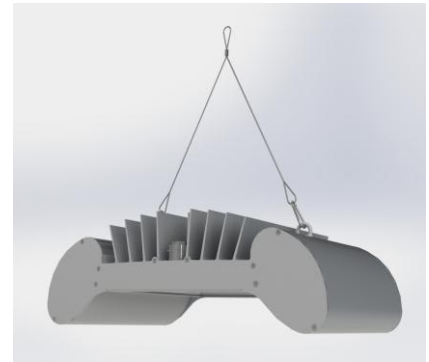
rev.07/18



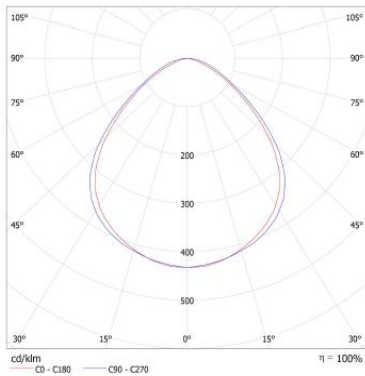
## Dimensions



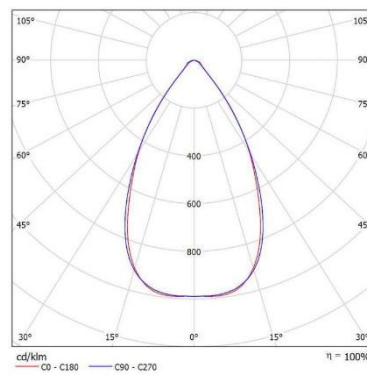
## Suspension kit



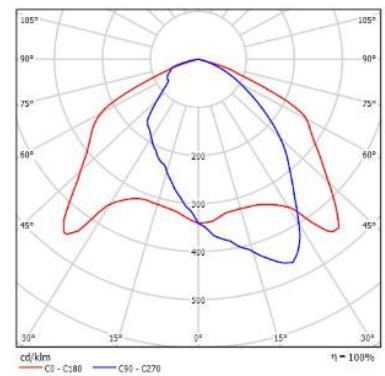
## Symmetric 100° standard



## Symmetric 60°



## Asymmetric 140°/90°



## Standard products

Code product	Modell	Screen	Dimension	Luminous Flux	Power
0844 4400 1120	P50VT25C_G11	Clear glass	10.08 x 18.6 x 5.94 in	13,500 lm	80 W
0844 4400 1520	P50VT25C_G15	Clear glass	10.08 x 18.6 x 5.94 in	17,650 lm	110 W
3844 4400 1020	S6 P50VT25C_G10	Clear glass	10.08 x 18.6 x 5.94 in	12,350 lm	80 W
3844 4400 1420	S6 P50VT25C_G14	Clear glass	10.08 x 18.6 x 5.94 in	16,470 lm	110 W
1844 4400 1020	A P50VT25C_G10	Clear glass	10.08 x 18.6 x 5.94 in	12,350 lm	80 W
1844 4400 1320	A P50VT25C_G13	Clear glass	10.08 x 18.6 x 5.94 in	15,880 lm	110 W

Thanks to the flexibility of this range, other products with various power and luminous flux are possible on request.  
Due to the technological evolution, luminous flux and power can show a tolerance of +/- 10% with reference to the reported values.



**Sangalli Technologies S.r.l.**  
SOCITA' A SOCIO UNICO  
Via Roveredo, 1/A (INT. 13)  
33170 PORDENONE - ITALIA



**Sangalli Technologies USA LLC**  
511 S 93rd Avenue  
68114 OMAHA – NE - USA