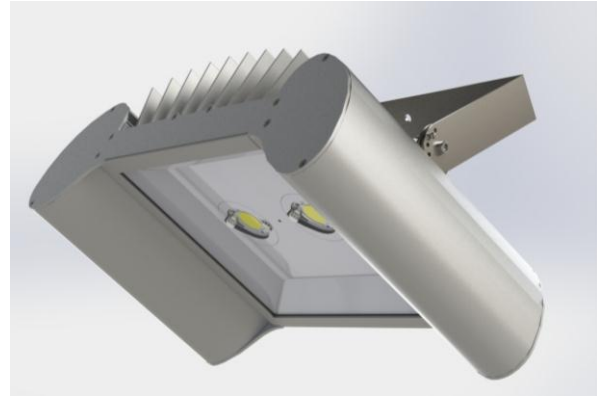


## Product description

SpotLED is a LED extruded aluminum projector designed for the lighting of parking, facades, sports facilities and industrial areas. Due to its extruded anodized aluminium housing SpotLED has an optimal thermal control and a longer system life; in terms of diffusers, you can choose between a tempered glass shield or a polycarbonate one, depending on the type of the installing environment: tempered glass shields ensure resistance to chemical substances, thermal shocks and collision while the polycarbonate version makes the device suitable for food industries.



**Applications:** Warehouses, manufacturing facilities, commercial facilities, exhibitions, food industry.

**Suggested installation heights:**  $7m < H < 10m$  ( $>10m$  with lenses)

## Technical features

**Luminaire Luminous flux:** 10500 ÷ 15000 lm

**Power range:** 80 ÷ 110 W

**Light source:** CILED COB

**Light source efficacy:** up to 164 lm/W

**Colour Rendering Index (CRI):** > 70

**Colour Correlated Temperature (CCT):** 3000 K, 4000 K, 5000 K (Std)

**Light emission:** 100°(std), 60°(CONCENTRATE), 140°/90°

**Input voltage range and frequency:** 110 ÷ 300 Vac / 47 ÷ 63 Hz

**Driver (built-in):** MEANWELL

**Insulation class:** SELV - CLASS II

**Power factor:** > 0,9

**Lifetime:** L80 > 90.000h @ Ta=25°C (IES TM-21-11 Prediction)

**Dimensions:** 256mm x 472mm x 151mm

**Materials:** Luminaire body made by anodized aluminium; stainless steel screws

**Diffuser material:** tempered glass or polycarbonate.

**Weight:** 6 kg

**Operating Temperature:** -20 ÷ 45°C

**IP protection:** IP65

**Luminous flux dimming (on demand):** DALI - 1÷10 Vdc

**Reference Standards:** EN60598-1, EN60598-2-1, EN62471, EN62031, EN61547, EN61000-3-2 (C class)

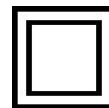
**Standard equipment:** luminaire provided with a 3-pole plug for a fast power supply connection and hooks to make easier the installation

**Accessories (on demand):** suspension kit

**Diffusers on demand:** clear glass (Std), transparent polycarbonate, matt polycarbonate and frosted polycarbonate.

**Colour:** Anodized SILVER GREY (Std); others customizable

**Warranty:** 5 YEARS



SELV



IP 65



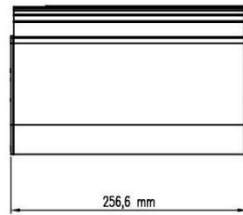
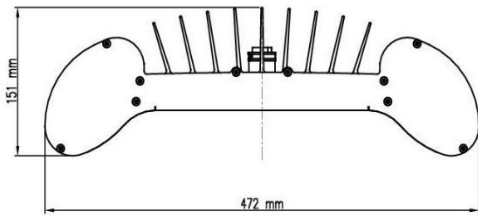
IK 08

# Data sheet: *SpotLED SERIES*

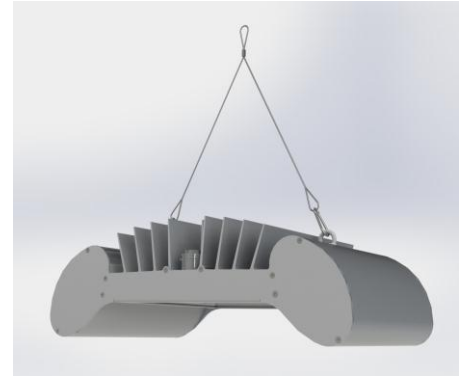
rev.03/18



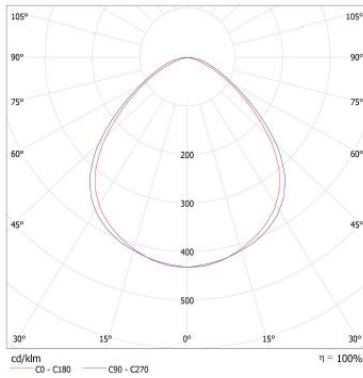
## Dimensions



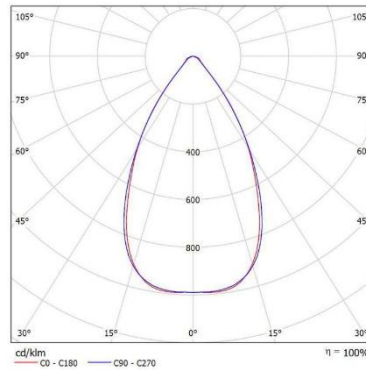
## Suspension kit



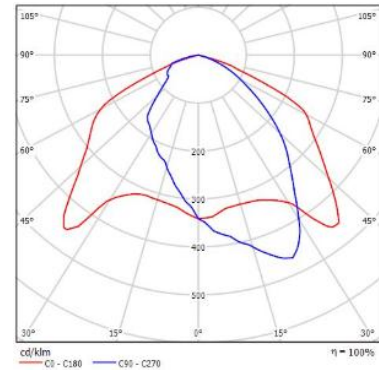
## Symmetric 100° standard



## Symmetric 60°



## Asymmetric 140/90°



## Standard products

Code product	Modell	Screen	Dimension	Luminous Flux	Power
0844 4400 1120	P50VT25C_G11	Clear glass	256 x 472 x 151mm	11500 lm	80 W
0844 4400 1520	P50VT25C_G15	Clear glass	256 x 472 x 151mm	15000 lm	110 W
3844 4400 1020	S6 P50VT25C_G10	Clear glass	256 x 472 x 151mm	10500 lm	80 W
3844 4400 1420	S6 P50VT25C_G14	Clear glass	256 x 472 x 151mm	14000 lm	110 W
1844 4400 1020	A P50VT25C_G10	Clear glass	256 x 472 x 151mm	10500 lm	80 W
1844 4400 1320	A P50VT25C_G13	Clear glass	256 x 472 x 151mm	13500 lm	110 W

Thanks to the flexibility of this range, other products with various power and luminous flux are possible on request.  
Due to the technological evolution, luminous flux and power can show a tolerance of +/- 10% with reference to the reported values.



**Sangalli Technologies S.r.l.**  
SOCITA' A SOCIO UNICO  
Via Roveredo, 1/A (INT. 13)  
33170 PORDENONE - ITALIA



**Sangalli Technologies USA LLC**  
511 S 93rd Avenue  
68114 OMAHA – NE - USA